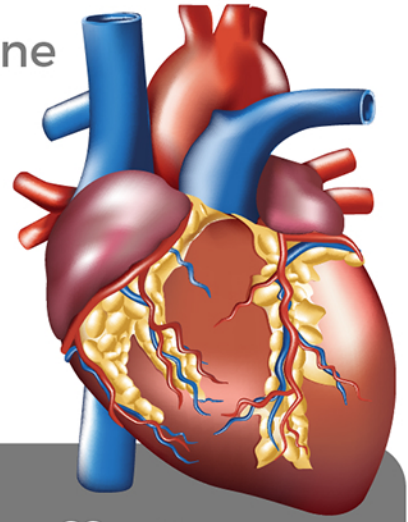


# HEART VALVE DISEASE



**Heart Valve Disease** is when one or more of the valves in your heart become diseased or damaged, preventing them from opening or closing properly. This can affect the ability of your heart to pump blood effectively.



**1 IN 10**

Heart valve disease affects 1 in 10 people over the age of 75.

## The most common SYMPTOMS:

- ⇒ shortness of breath (after physical activity or when lying down)
- ⇒ swelling of the ankles and feet
- ⇒ feeling excessively tired
- ⇒ dizziness or fainting
- ⇒ irregular heart beat
- ⇒ chest pain or tightness

Some people with heart valve disease will experience no symptoms for many years.



**CHART™ (Cardio-HART™) detect up to 95% of all common heart diseases, including Heart Failure, and all Heart Valve Diseases.**

### Cardio-HART™

Breakthrough cardiac diagnostics for the early detection of Cardio-Vascular Disease [CVD], Heart Failure [HF], and all Heart Valves diseases [HVD].

Cardio-Phoenix, Inc  
[www.cardiophoenix.com](http://www.cardiophoenix.com)

